

Quilt Preparation

Quilt Top



1. Secure all seams.
2. Trim all threads.
3. Press quilt top well.
4. Square up the quilt top.
5. Mark the top of the quilt with a safety pin.

Quilt Back

1. Use a 1/2" seam allowance for all seams to piece your backing. Press all seams open.
2. Backing must be 4-6 inches larger on all four sides of the quilt.
3. Press backing well.

*Do not pin or baste your quilt together.

*Your quilt will be quilted in the condition that it was received. It will be as free of tucks and pleats as your piecing will allow.

Shipping Your Quilt



Before shipping your quilt, please contact me so that I know that you are shipping your quilt.

Once I receive your quilt I will contact you to confirm your thread and pattern selections and approximate completion date.

Shipping charge and insurance will be added to your order. I will return your quilt by USPS or UPS. The balance is due prior to returning your completed quilt.

I will pick-up and deliver your quilt.

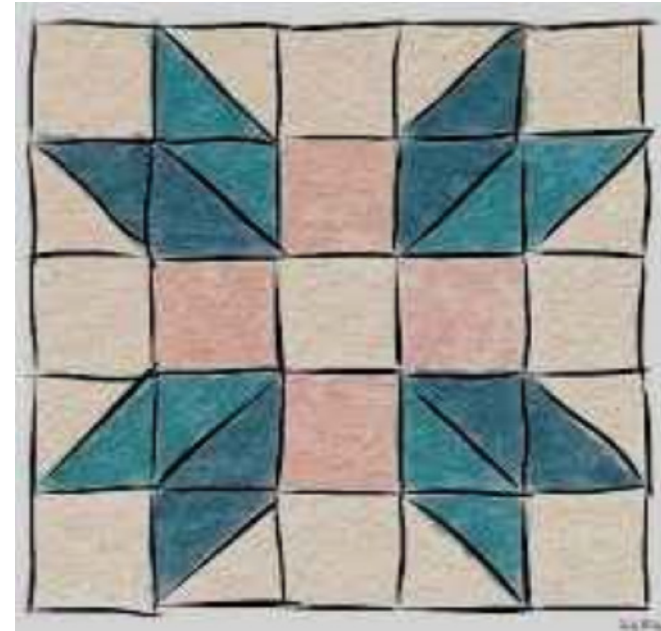
Please contact me to make arrangements.

SewCrazed Quilting

by Marsh



Professional
Longarm Computerized
Machine Quilting



Kathy Marsh - Owner

Shop: 562-448-3820

**2661 W Whittier Blvd Ste D
La Habra, CA 90631
email: sewcrazed1@aol.com**

Edge to Edge Patterns

Edge to edge patterns and pantograph patterns are priced by the square inch. For most patterns the price is .025cents/ per square inch.

Sample Sizes

Quilt Type	Size	Price
Baby	36" x 45"	\$50.00
Crib	45" x 60"	\$50.00
Youth	54" x 72"	\$97.00
Twin	66" x 89"	\$146.00
Double	82" x 89"	\$182.00
Queen	88" x 94"	\$206.00
King	104" x 94"	\$244.00
Cal King	100" x 98"	\$245.00

The above sample prices do not include batting or taxes.

Please note: These are only sample prices on edge to edge and based on quilt measurement, prices may reflect differently.

* I have a vast assortment of patterns to choose from and will be adding more in the future. If you have a special request, I will do my best to accommodate your request.

* For small and crib size quilts there is a \$50.00 minimum.

* Prices subject to change without notice.

*** Payment is required upon delivery.**

Custom Quilting

Custom quilting includes all of the following:

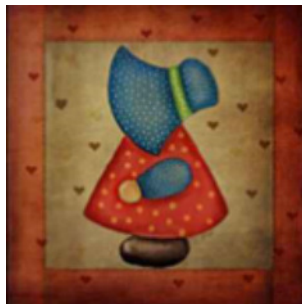
- *Individual motifs
- *Unique quilting specifically to fit within the piecing of your quilt
- *Separate design for the borders or sashing
- *Stitch in the ditch or cross hatching



Pricing:
\$.035 - \$.060 per square inch,
depending on the type of customizing
requested.

Possible Additional Charges

\$12.00 per seam to sew backing fabric.
\$25.00 per hour for quilt repairs,
repairing seams. clipping threads.



Quilting Material



*Batting

Quilters Dream Blend
(70% Cotton - 30% Polyester)

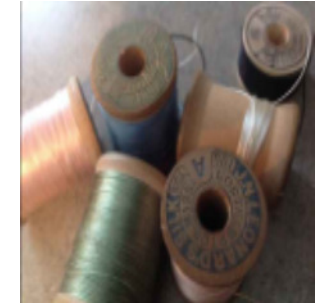
60" wide

93" wide

122" wide

Sold by the yard

**Note: cotton prices vary, please
ask for current price.**



*Thread

Solid color thread is included in the quilting charge.

I have an assortment of colors to choose from.

Variegated thread is an additional \$5.00 - \$10.00 charge depending on quilt size.